

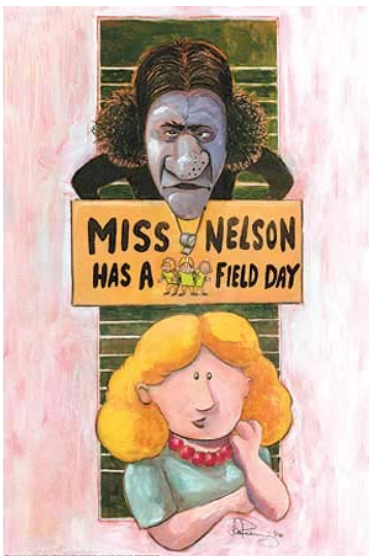


Miss Nelson Has a Field Day

Based on the Book
*Miss Nelson Has a
Field Day*
by Harry Allard and
James Marshall

Adapted by Joan
Cushing

Book, Music, and
Lyrics by Joan
Cushing



ORLANDO-UCF



SHAKESPEARE FESTIVAL

Professional Theater

About the Show

About the Show

Based upon the popular Miss Nelson series, **Miss Nelson Has a Field Day** finds Horace B. Smedley Elementary School in the middle of a losing football season. The Smedley Tornadoes' losing streak is all that the kids of Room 207 can talk about. Can anyone turn the Tornadoes around, and lead them to victory? No one is safe when Miss Viola Swamp returns as the new Tornadoes football coach.

About the Festival

Now in our 18th season, the Orlando-UCF Shakespeare Festival is a non-profit, professional theater that presents productions of Shakespeare, classic, and contemporary plays as well as the Darden Theater for Young Audiences Series. The Festival also cultivates new scripts and playwrights through the annual Harriett Lake Festival of New Plays and fosters innovative educational programs to serve the community.

Our Name

Our company began 18 years ago as an offshoot of UCF. Though we are currently a separate organization, located in Loch Haven Park, and employing professional actors, directors and designers (not students), we keep the UCF in our name in respect to our history.

Scholarships

Through the generosity of a few Central Florida businesses and foundations, the Festival is able to visit a number of schools every year to present our unique workshops FOR FREE! To find out if you qualify for a scholarship, please call the Education Director at 407-447-1700 x 208.

 **Harcourt Education**

Theater Etiquette Guidelines

Theater Etiquette Guidelines for *Miss Nelson Has a Field Day*

(Please read aloud before the performance)

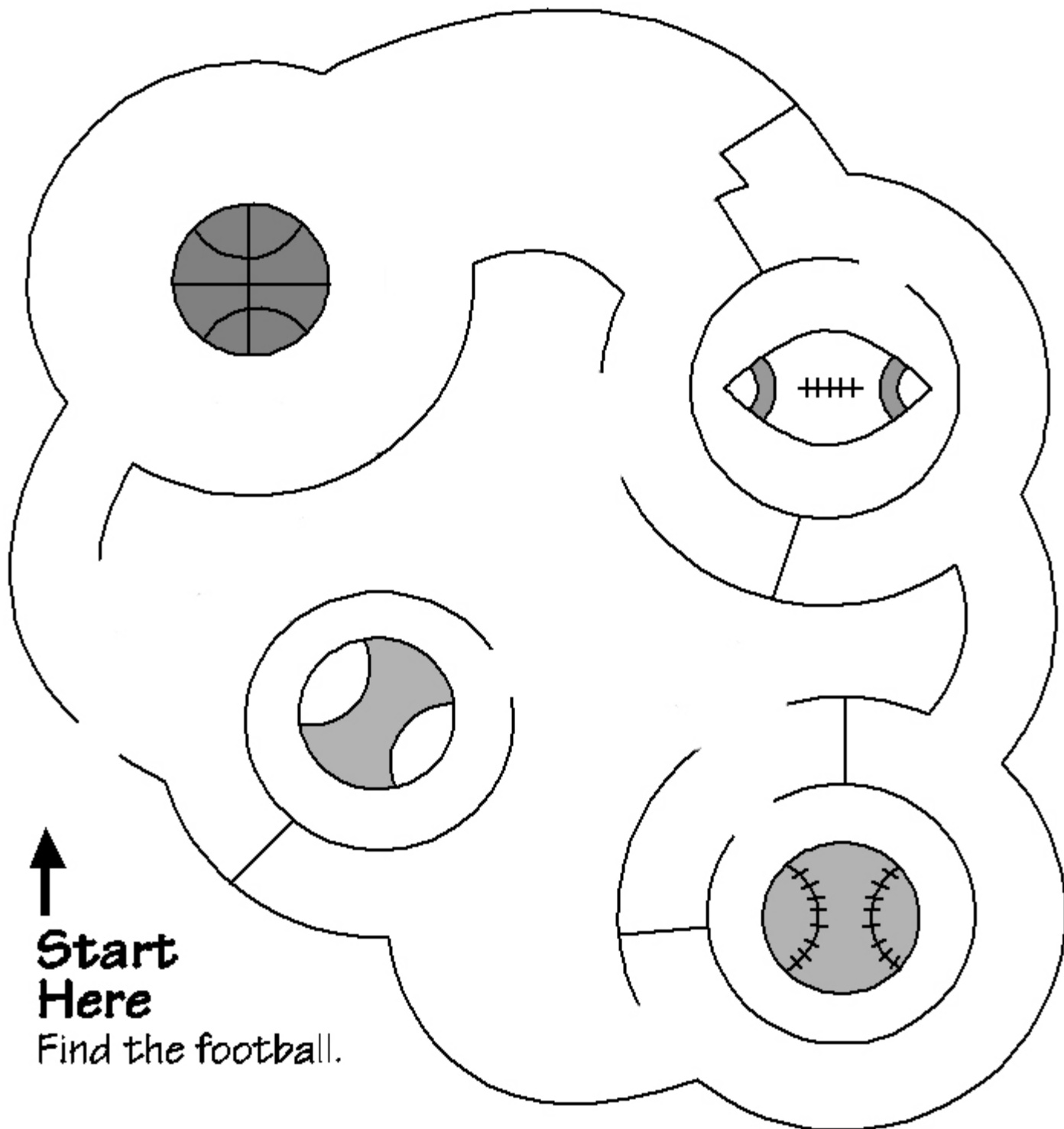
- Once inside the theater, please turn off all cell phones, beepers, video games, and alarms. These sounds could disrupt your neighbors and the actors onstage.
- Don't bring any refreshments into the theater, including gum and candy.
- Once the show has begun, please keep your focus onstage and don't talk to your neighbors. Unlike a recorded television show or film, the actors onstage can hear you!
- The magic created in a theater depends on the audience and the performers working together, so it's important to pay attention to everything that's happening onstage. In live theater, each performance holds different possibilities and outcomes. If you went to see a play twice, you would notice certain things were different each time, even though you were seeing the same play!
- Let yourself be a part of the magic! Even though you shouldn't discuss the show with your neighbors during the performance, please feel free to have fun. You can laugh if you see something funny, or even cry if you see something sad. You can also clap or sing along with the music (if you know the words).
- At the end of the show, please show the actors your appreciation for performing for you by cheers and applause. Remember, the actors onstage can hear you, and they would love to have your support and encouragement.
- Pay attention to the show's "message" or themes, and ask yourself how they relate to your life.
- If you had a good time, share your theater experience with a parent or friend!

Before the Performance: Grades Pre-K–Kindergarten

Find the Football

The Smedley Tornadoes are not very good at working together on the football field! With a partner, have students find their way through this maze of sports to end at the football. As a bonus, ask them:

How many balls do you see in this picture? What sports that they are from? Why is teamwork important?



Before the Performance: Grades 1–2

Cheers: Practice your Rhymes

In *Miss Nelson Has a Field Day*, Lauren tries to cheer her team to victory. How do cheers make you feel when you're at a game? Ask students to dictate examples of cheers that they have heard at various sports events.

Ex: "We're bad. We know it. We've come out here to show it."

What do cheers have in common with poetry or songs? Cheers have rhyming sounds, and those rhyming sounds help cheers stay in a person's mind.

Try It!

Tell students that they are going to work in small groups to create their very own cheer. First, ask students to choose a team name from those listed below, or make up their own. Then, have students make a list of words that rhyme with their team's name. Ask someone in the group to write the rhymes down on a piece of paper. Then, have the students work together to write a short cheer, using the team name and a few of the rhymes that they brainstormed together. The cheer only needs to be a few sentences long. Finally, ask each group to share their work with the rest of the class. After each group has presented their cheer, the classroom should vote on their favorite "class cheer," and share it with family and friends.



Team Names

Wild Cats

Toad Stools

Cherry Pits

Short Cakes

Jet Planes

Stop Signs

Before the Performance: Grades 3–4

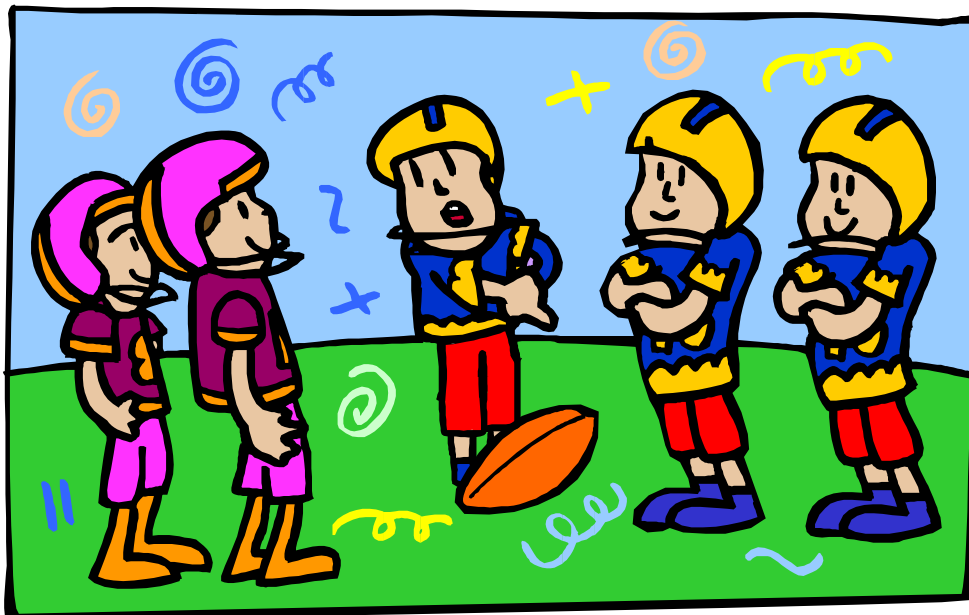
Math Goals

In *Miss Nelson Has a Field Day*, the Smedley Tornadoes need to work together to win a game. Miss Nelson teaches the students of Room 207 that they need to work hard. They should learn from famous leaders in history, and never give up! Sometimes stretching your muscles isn't enough. You also need to use your brains and some determination to win the game!

It's Your Turn!

The Smedley Tornadoes have taken the field, but they need your help to win the game. Answer the following math problems correctly to help steer Kenny, Daniel, and Patrick towards the end zone!

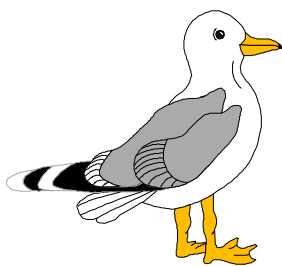
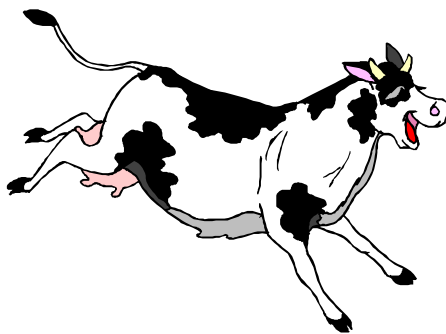
1. The night before the game, Kenny drinks 2 glasses of water. If he wants to be ready for the game the next day, he needs to drink 4 times that much! How many glasses of water should Kenny drink? (Hint: $4 \times 2 = ?$)
2. Daniel is at the 44 yard line, and he needs to run to the 25 yard line. How many yards does he need to run before he can stop? (Hint: $44 - 25 = ?$)
3. Patrick set his alarm for 8:15 am. The game starts at 10:30am. If it takes Patrick 25 minutes to get ready, and 40 minutes to get to the football field, what time will Patrick show up at the field? (Hint: $8:15 \text{ am} + 25 \text{ minutes} + 40 \text{ minutes} = ?$)



After the Performance: Grades Pre-K–Kindergarten

Island Images

In *Miss Nelson Has a Field Day*, the teachers convinced Coach Armstrong that he needed to take a rest. In a very funny song, the teachers told the coach that he should go to a tropical beach to relax. Beaches have different plants and animals than other parts of the world, because of their temperatures and locations. Ask students to look at the following pictures and circle the ones that belong at a beach. Then, ask students to name three beaches in the state where they live! Locate beaches on a class map, and have students volunteer to point them out.



After the Performance: Grades 1–2

Playing the Part

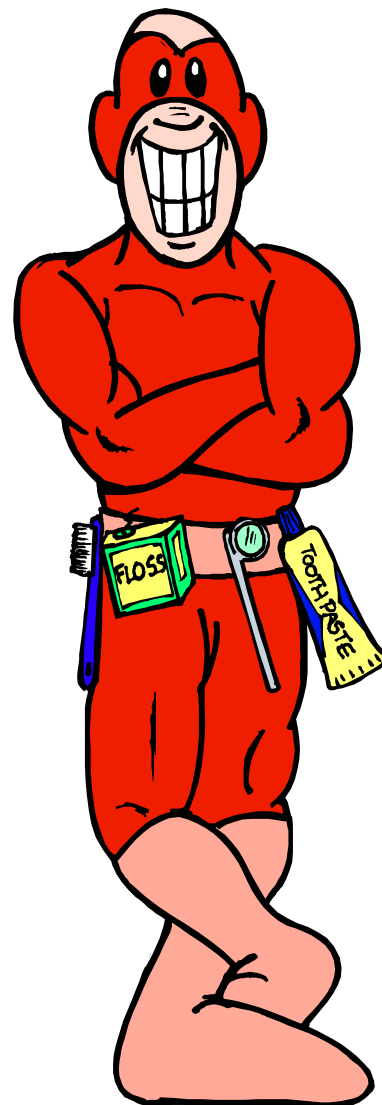
In **Miss Nelson Has a Field Day**, Miss Nelson uses Viola Swamp to teach the children a lesson. Did you see that Miss Nelson and Miss Swamp were never on stage together at the same time? Who do you think Miss Swamp is? If thought it was Miss Nelson, you were right!

Can you think of any other story or movie where someone changed what they look like to become another person? Think of characters like Clark Kent and Superman or Miley Stewart and Hannah Montana. Why do you think that people change what they look or sound like to become someone else?

When people dress up to hide who they really are, sometimes they wear a mask. They also change their name. In the play that you saw, Miss Nelson changed her name to Miss Swamp when she was acting mean and scary.

Try This!

1. Write your own name on a piece of paper.
2. Create a new super-hero name. Write it down next to your real name.
3. Write down what your super-hero is like. Use words that describe colors, sounds, sizes, and shapes.
4. Write down your super-hero's favorite power.
5. Think about how your super-hero walks and talks. How is it different from the way that you walk and talk?
6. Draw and color a picture of your super-hero.
7. Share your super-hero name with the class. Let the class see your drawing. Use your body and voice to show the class what your super-hero moves and sounds like. Have fun with your new identity!



After the Performance: Grades 3–4

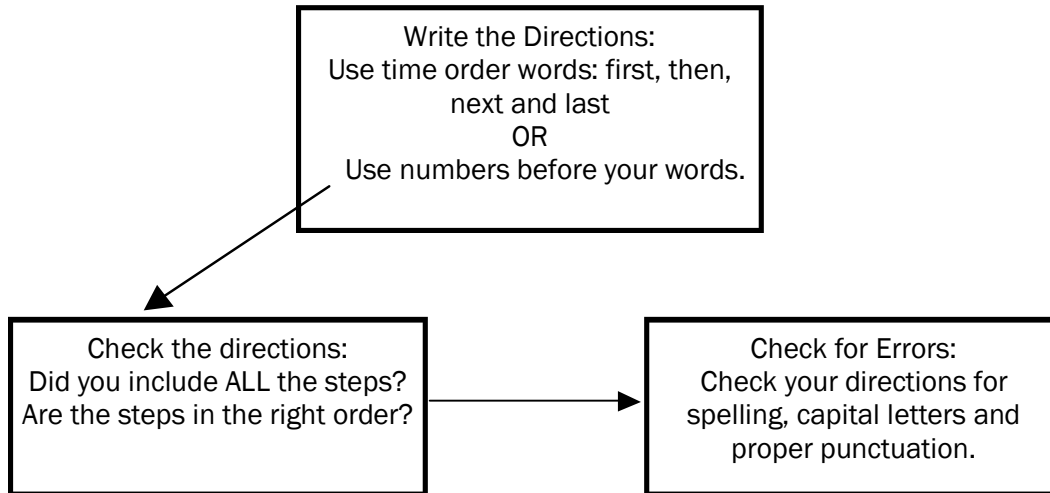
Follow the Directions

Did you enjoy the story of **Miss Nelson Has a Field Day**? Everyone has a favorite story. Sometimes stories are told through music, or dance. Sometimes stories are told through a play or a movie. What directions could you use for telling a good story?



Think about how an author or storyteller tells a good story, and use the helpful hints. Read the example below. Then, write your own directions to explain how someone can tell a good story. Share your work with the class.

Helpful Hints

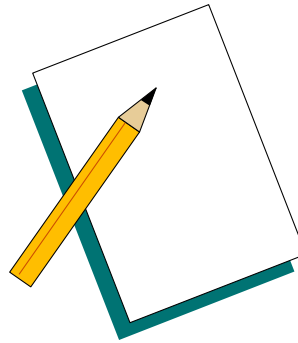


Example: Read the directions below for making an art project:

First, you get out the art supplies that you've chosen to use. Then, you find a nice quiet spot with plenty of space and good light. Make sure that your parents/guardians approve of your art space. Then, put on an art smock or an old t-shirt so that your clothes won't get dirty. Next, you use your imagination to decide what you'd like to create. Then, you let your creativity flow, and you create your own masterpiece. Finally, you clean up your art area, put away your supplies, and proudly display your artwork for your family and friends.

What You Thought

After seeing a play, we are often filled with emotional reactions based on what we've experienced. What thoughts and feelings did you have after seeing **Miss Nelson Has a Field Day**? Write (or draw) a **critique** of the show, and share your thoughts with the rest of the class.



What is a critique?

A critique is an essay or article that tells of a person's opinion of an artist's work (such as a painting, play, book, or music).

What is a critic?

A critic is the person who expresses their opinion of an artist, or the author of the critique. Critics are relied upon to be honest and fair about their thoughts, feelings, likes and dislikes.

What did you think?

What is your honest opinion of **Miss Nelson Has a Field Day**? What parts of the show did you like or dislike and why? Don't forget to consider all of the parts of the show (ex: lighting, costuming, music, acting, sets, etc.) Would you tell someone else that they should see this play? Why or why not?

The Orlando-UCF Shakespeare Festival would like to thank the following sponsors:



Further Reading

If you liked **Miss Nelson Has a Field Day**, look for these other books by Harry Allard and James Marshall in the library, your local bookstore, or online bookseller*:

Miss Nelson is Missing

Miss Nelson is Back

Miss Nelson Has a Field Day

Bumps in the Night

It's So Nice to Have a Wolf Around the House

There's a Party at Mona's Tonight

*don't forget to ask for permission before using the internet

