

# Spotlight Guide 2017 - 2018

## **Aladdin** **and the Magic Lamp**

Based on the folk tales of  
**One Thousand and One Arabian Nights**

Adapted for the stage by  
**Brandon Roberts**

In this "choose your own adventure", interactive adaptation of *One Thousand and One Aladdin Nights*, four actors tell the story of a young boy named Aladdin living in a Middle Eastern Kingdom in the early 1700's. The story is narrated by the Genie of the *Ring* (a genie who can help influence our decisions when faced with two choices). Aladdin has fallen in love with the beautiful, kind Princess Adara and must now find a way to marry her, even though he is poor. In this production 4 actors portray Aladdin, Genie of the Ring, Aladdin's Mother, Princess Adara, Sultan, Vizier Hasna, Vagabond, Jeweler, Rigel, and Genie of the Lamp.

## Activities

### Build a Story

Read students a short story, stopping to clearly show any pictures or illustrations to the students. When finished, ask the students to illustrate the plot/action as it occurred throughout the story. Have students volunteer to share their illustrations with the rest of the class.

### Discussion Questions

Asking questions that lead children up the "thinking ladder". Open question examples: What did you notice at the play today....What did you see? What about the play was different from the book/story? What surprised you? What impressed you?

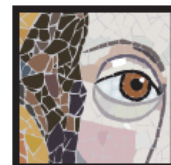
### Friendly Letter Writing

After watching the play, write Orlando Shakespeare Theater a "Friendly Letter" and tell us what you think! Tell what you liked or disliked about the story, the characters, costumes, or set. Make sure to use the 5 parts of the letter listed in the lesson and to support your thoughts with examples and reasons.

*See the full study guide for expanded activities.*

## Florida Standards

LAFS.3.RI.1: Key Ideas and Details  
LAFS.2.W.2: Production and Distribution of Writing  
LAFS.K.L.3: Vocabulary Acquisition and Use  
TH.4.S.1: The arts are inherently experiential.  
TH.2.F.2: Careers in and related to the arts



**ORLANDO  
SHAKESPEARE  
THEATER**  
IN PARTNERSHIP WITH UCF