

Spotlight Guide 2017 - 2018



Adapted from Arthur Conan Doyle's novel
by Steven Canny and John Nicholson

Sherlock Holmes and Doctor Watson journey to the English countryside to investigate the mysterious case of the Baskerville family. One by one the male heirs are dropping dead. But why? And who—or what—is responsible? In this hilarious and madcap take on the most famous detective of all time, a trio of actors play a dozen roles including Sir Charles Baskerville, Sherlock Holmes, Watson, Sir Henry Baskerville, Cabbie, Yokel 1,2,3, Wise Yokel, Stapleton, Cecile, Barrymore, and Mrs. Barrymore.

Activities

Write Your Own Sherlock Story

Think up your own premise for a Sherlock Holmes mystery including a foreign location and an animal or object native to that location. Do the research of that area - the different terrain, weather, language and culture that you could utilize in creating a mystery and share your findings and premise with the class.

Vocabulary Word Search

This will serve as both a word search and a little vocabulary quiz! Using the definitions, find the vocabulary word that matches the definitions within the word search. Find the word search and quiz on page 13 of the full guide.

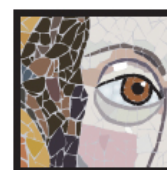
Discussion & Themes

How does having only three actors play all the characters affect the story telling? What would you miss or gain by adding more actors? How does the pace of the storytelling add to the suspense? How do our mistakes affect our ability to reason? What would a world without deceit be like? What causes you to feel isolated?

See the full study guide for expanded activities.

Florida Standards

LAFS.910.RL.1: Key Ideas and Details
LAFS.910.W.1: Text Types and Purposes
LAFS.1112.RL.1: Key Ideas and Details
TH.912.F.2: Careers in and related to the arts
TH.68.S.1: The arts are inherently experiential.



**ORLANDO
SHAKESPEARE
THEATER**
IN PARTNERSHIP WITH UCF

PG-13

Language, Use of Alcohol, Use of Tobacco, Cross-Dressing, Violence

Most appropriate for Grade 8 and up. Children under 5 will not be admitted to the theater.