

Spotlight Guide 2017 - 2018



By Karen Zacarías

Gardens and cultures clash, turning friendly neighbors into feuding enemies as Pablo, a high-powered lawyer, and doctoral candidate Tania, his very pregnant wife, are realizing the American dream when they purchase a house next door to community stalwarts Virginia and Frank. But a disagreement over a long-standing fence line soon spirals into an all-out war of taste, class, privilege, and entitlement where you're guaranteed no one comes out smelling like a rose. The characters in this play are Tania Del Valle, Pablo Del Valle, Virginia Butley, and Frank Butley.

Discussion and Themes

Homeowners, landscapers, and local policy makers can benefit birds and other wildlife by simply selecting native plants when making their landscaping decisions.

How does the play explore the issues of ageism, racism and classism? Which is the strongest force in this story? How strong are these forces in your community?

Do you think any characters are completely wrong? Completely right? Why?

Robert Frost famously wrote, in his poem "Mending Wall," "Good fences make good neighbors." What do you think he meant by this? Do you agree?

Are there any moments in the play that are equal parts serious and funny? How does the playwright combine the two?

See the full study guide for expanded discussion and themes.

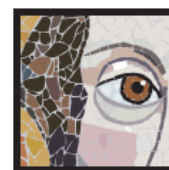
Florida Standards

LAFS.910.RH.1: Key Ideas and Details

LAFS.1112.RL.1: Key Ideas and Details

TH.912.F.2: Careers in and related to the arts

TH.68.S.1: The arts are inherently experiential.



**ORLANDO
SHAKESPEARE
THEATER**
IN PARTNERSHIP WITH UCF

PG-13

Language, Use of Alcohol

Most appropriate for Grade 8 and up. Children under 5 will not be admitted to the theater.